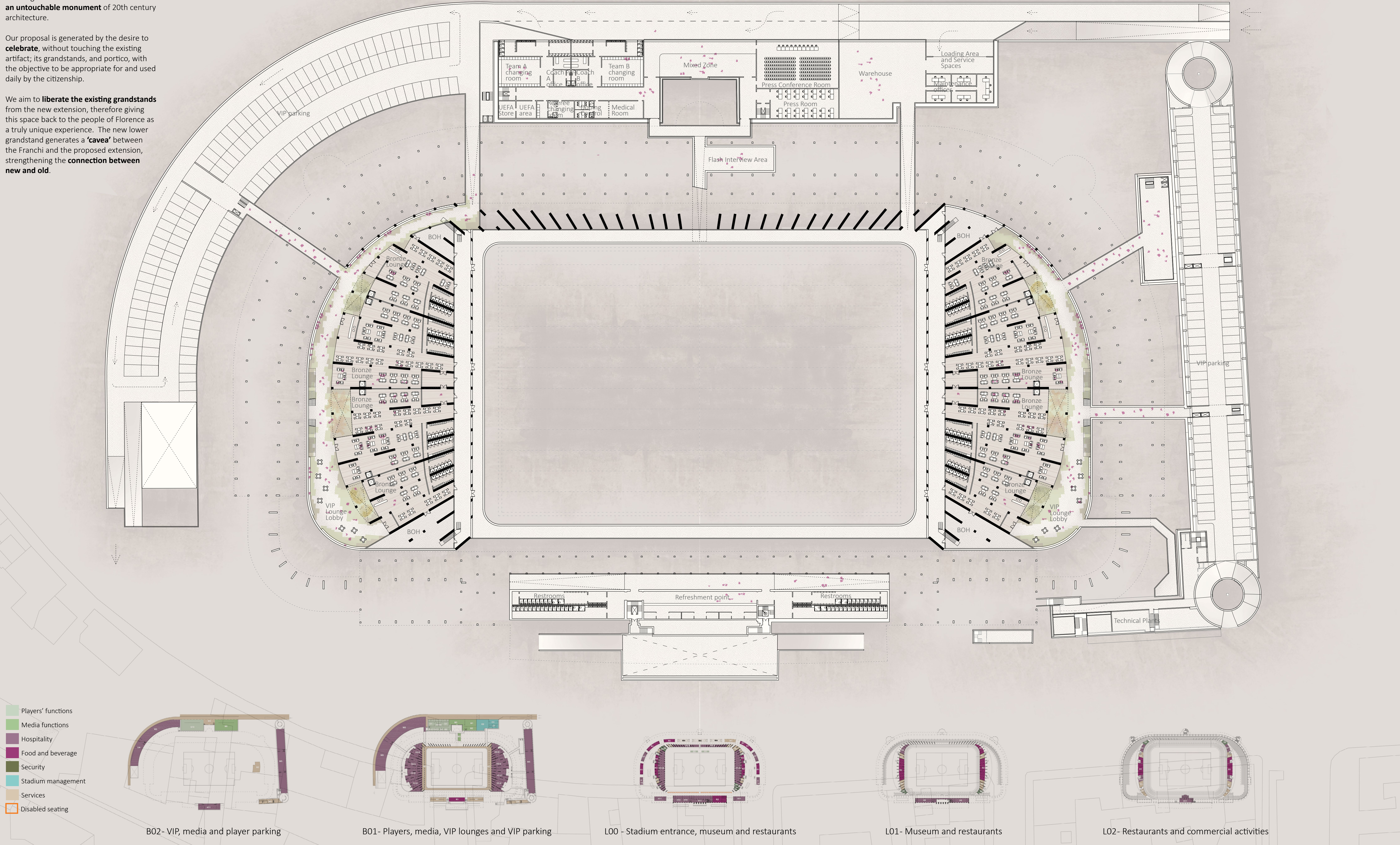


ARTEMIO FRANCHI STADIUM

Pier Luigi Nervi's Artemio Franchi Stadium is an **untouchable monument** of 20th century architecture.

Our proposal is generated by the desire to **celebrate**, without touching the existing artifact; its grandstands, and portico, with the objective to be appropriate for and used daily by the citizenship.

We aim to **liberate the existing grandstands** from the new extension, therefore giving this space back to the people of Florence as a truly unique experience. The new lower grandstand generates a **'caves'** between the Franchi and the proposed extension, strengthening the **connection between new and old**.

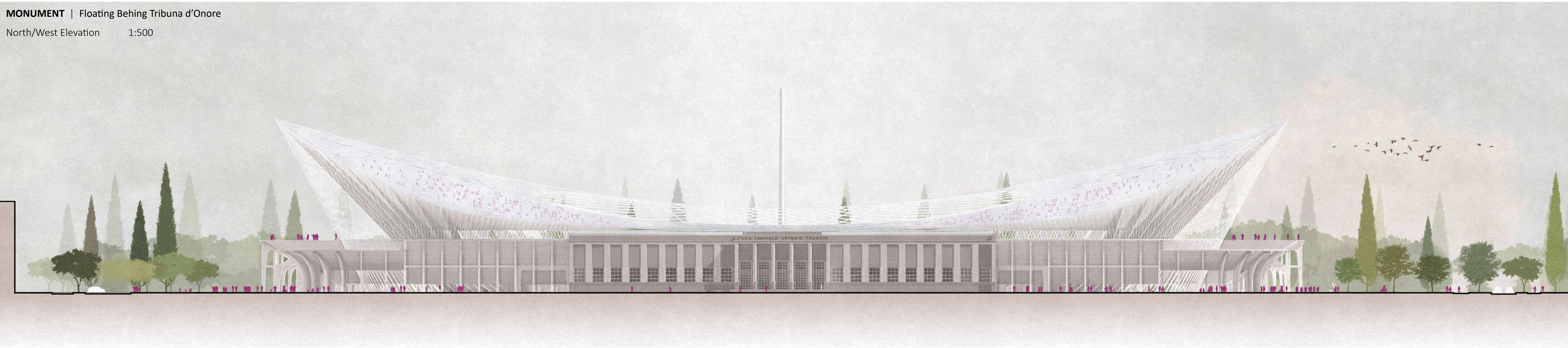


INTEGRATING INFRASTRUCTURE | Il Franchi

Basement Level 01 1:500

MONUMENT | Floating Behing Tribuna d'Onore

North/West Elevation 1:500



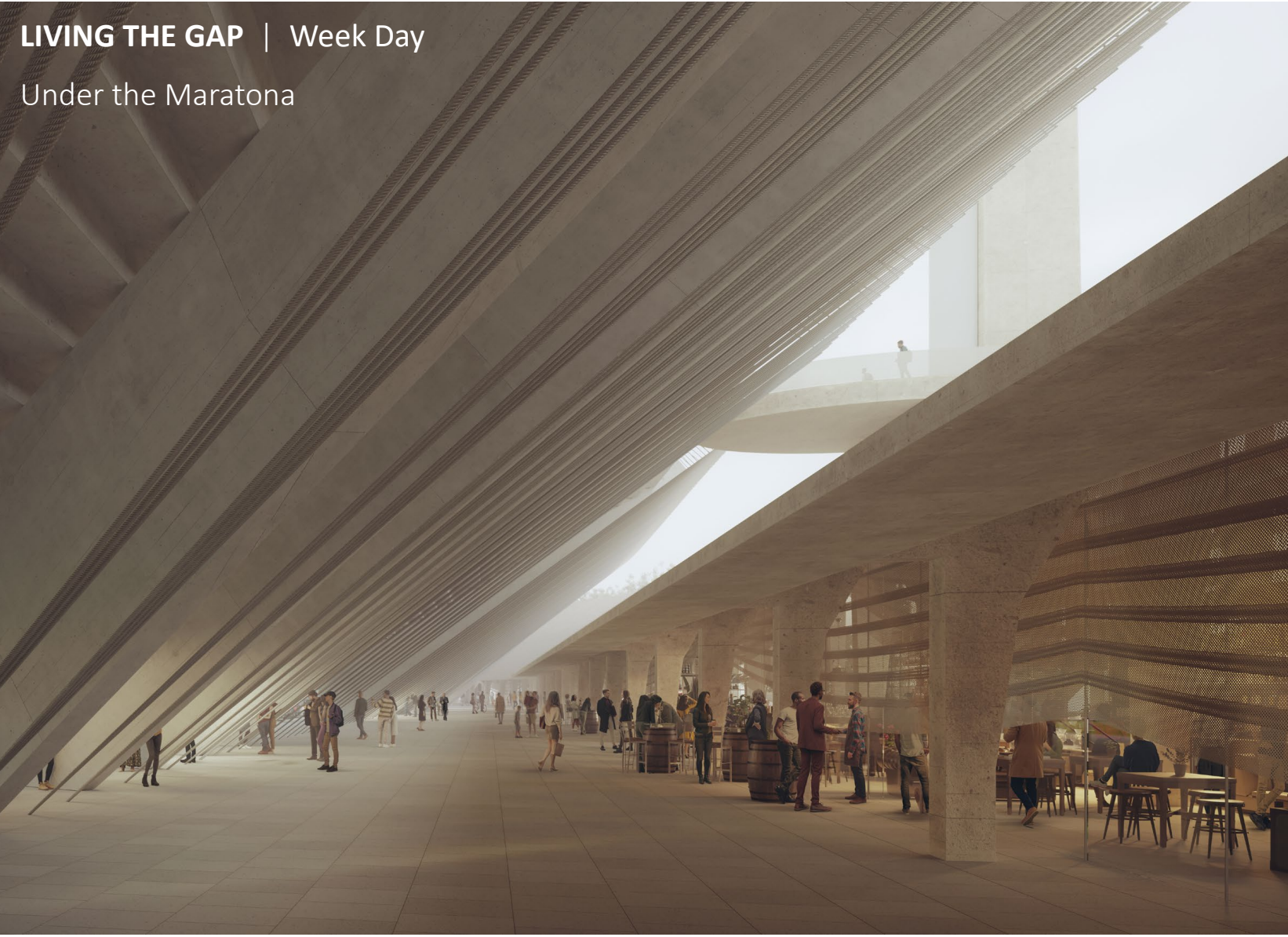
BELVEDERE | Concert

Above Nervi



LIVING THE GAP | Week Day

Under the Maratona



DIALOGUE | Permeable Infrastructure

Portico extends plaza and stadium



INHABITING THE PORTICO | Market Day

Plaza view from the garden boulevard

